

# LUBRA-SLIDE™

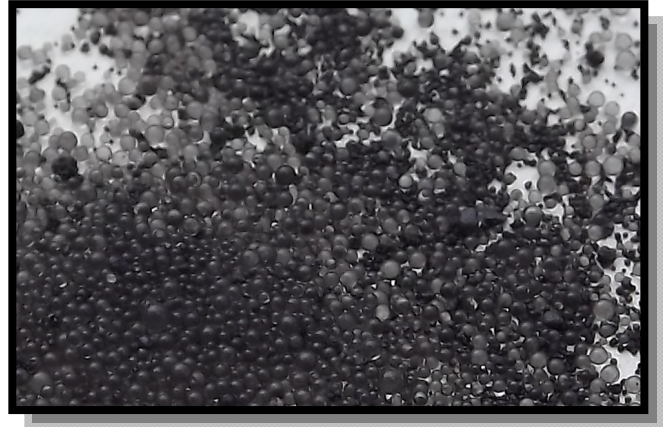


The challenge of resolving torque and drag issues economically, in the shortest amount of time is not trivial. **Sun Specialty Products** meets this challenge with a dual particle blend which combines SUN's co-polymer bead technology and beaded graphite. Whether you are having a problem getting through a tight spot or want to make sure your casing gets to bottom, **Lubra-Slide™ Beads** provide you the lubricity and stand-off required.

## Lubra-Slide™ Beads

### Designed to:

- ◆ Reduces torque and drag
- ◆ Reduces casing wear
- ◆ Non-abrasive
- ◆ Compatible with both oil and water base mud
- ◆ Environmentally safe
- ◆ Exceptional resistance to deformation
- ◆ Thermally stable in down hole drilling environments



### Application

- ◆ Concentrations of 2 – 8 ppb (5.71 – 22.87 Kg/m<sup>3</sup>) is normally sufficient to resolve torque and drag
- ◆ Concentrations of 8 –12 ppb (22.87 – 34.31 Kg/m<sup>3</sup>) will be sufficient for spotting in logging, liners and running casing
- ◆ **LUBRA-SLIDE™ BEADS** can easily be added through the mud-mixing hopper

### Packaging

- ◆ **LUBRA-SLIDE™ BEADS** are available in 50 lbs (22.6 Kg) sacks, 48 or 50 sacks per pallet, 2000 lb. super-sacks

### Physical Properties

- ◆ Form: Spherical beads
- ◆ Color/Size: Black/Grey
- ◆ Specific gravity: 1.5 - 1.7
- ◆ Thermally stable: >450°F Bottom hole temperatures

### Typical Uses for LUBRA-SLIDE™ BEADS

- ◆ Aids in directional changes or sliding
- ◆ Aids in prevention of sticking of liners or casing
- ◆ Additional mechanical lubrication for all muds
- ◆ Allows more true weight to bit
- ◆ Spot in hole prior to logging operations
- ◆ Spot in key seats, dog legs, etc. to reduce torque, drag, and sticking problems



Enhancing Your Value Horizons

[SUNSPECIALTYPRODUCTS.COM](http://SUNSPECIALTYPRODUCTS.COM)